

Clamping pads

with threaded stud

SPECIFICATION

Types

- Type **B**: Smooth contact face
- Type **R**: Serrated contact face
- Type **BR**: Smooth contact face, with automatic return
- Type **RR**: Serrated contact face, with automatic return
- Type **RH**: Serrated contact face, with hard metal ball
- Type **RRH**: Serrated contact face, with automatic return, with hard metal ball

Steel
tempered, phosphated

Ball
Steel
hardened, blank
(Type B / R / BR / RR)

Ball
Hard metal steel
nickel plated
(Type RH / RRH)

Spring element
Plastic (PUR)
(Type BR / RR / RRH)



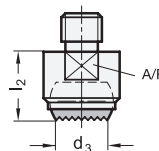
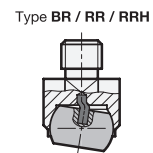
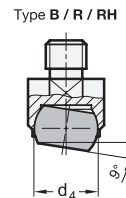
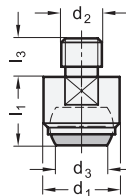
TECHNICAL INFORMATION

- Elastomer characteristics (see page A32)

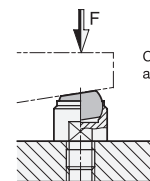
INFORMATION

GN 709.1 clamping pads are used as movable supports or plungers for clamping workpieces. They can also be used as stops. For cast components the use of clamping pads with a hard metal ball is recommended.

After the clamping process, the contact surfaces of clamping pads automatically reset themselves to their initial position. This prevents the bearing from jamming in an inclined position when the workpiece is inserted. The bearing can be rotated by a maximum of 9° and is secured against further rotation.



Application example



Clamping pad when used as a workpiece support

GN 709.1-B

Description	d1	d2	d3	d4	l1 ±0.02	l3	A/F	Static load max. in kN	⚖
GN 709.1-13-M6-B	13	M 6	7.2	10	13	8	11	10	12
GN 709.1-13-M8-B	13	M 8	7.2	10	13	8	11	10	12
GN 709.1-20-M8-B	20	M 8	10.5	16	18	10	17	25	38
GN 709.1-20-M10-B	20	M 10	10.5	16	18	10	17	25	40
GN 709.1-20-M12-B	20	M 12	10.5	16	18	12	17	25	50
GN 709.1-30-M16-B	30	M 16	20	25	27	16	27	90	150
GN 709.1-50-M20-B	50	M 20	34.5	40	35	20	41	165	520
GN 709.1-50-M24-B	50	M 24	34.5	40	35	24	41	165	516

GN 709.1-R

Description	d1	d2	d3	d4	l2 ±0.1	l3	A/F	Static load max. in kN	⚖
GN 709.1-13-M6-R	13	M 6	7.2	10	13	8	11	10	12
GN 709.1-13-M8-R	13	M 8	7.2	10	13	8	11	10	13
GN 709.1-20-M8-R	20	M 8	10.5	16	18	10	17	25	38
GN 709.1-20-M10-R	20	M 10	10.5	16	18	10	17	25	40
GN 709.1-20-M12-R	20	M 12	10.5	16	18	12	17	25	40
GN 709.1-30-M16-R	30	M 16	20	25	27	16	27	90	150
GN 709.1-50-M20-R	50	M 20	34.5	40	35	20	41	165	520
GN 709.1-50-M24-R	50	M 24	34.5	40	35	24	41	165	512

GN 709.1-BR

Description	d1	d2	d3	d4	l1 ±0.02	l3	A/F	Static load max. in kN	⚖
GN 709.1-13-M6-BR	13	M 6	7.2	10	13	8	11	10	12
GN 709.1-13-M8-BR	13	M 8	7.2	10	13	8	11	10	13
GN 709.1-20-M8-BR	20	M 8	10.5	16	18	10	17	25	37
GN 709.1-20-M10-BR	20	M 10	10.5	16	18	10	17	25	39
GN 709.1-20-M12-BR	20	M 12	10.5	16	18	12	17	25	42
GN 709.1-30-M16-BR	30	M 16	20	25	27	16	27	90	150
GN 709.1-50-M20-BR	50	M 20	34.5	40	35	20	41	165	486
GN 709.1-50-M24-BR	50	M 24	34.5	40	35	24	41	165	516

GN 709.1-RR

Description	d1	d2	d3	d4	l2 ±0.1	l3	A/F	Static load max. in kN	⚖
GN 709.1-13-M6-RR	13	M 6	7.2	10	13	8	11	10	12
GN 709.1-13-M8-RR	13	M 8	7.2	10	13	8	11	10	13
GN 709.1-20-M8-RR	20	M 8	10.5	16	18	10	17	25	37
GN 709.1-20-M10-RR	20	M 10	10.5	16	18	10	17	25	39
GN 709.1-20-M12-RR	20	M 12	10.5	16	18	12	17	25	42
GN 709.1-30-M16-RR	30	M 16	20	25	27	16	27	90	148
GN 709.1-50-M20-RR	50	M 20	34.5	40	35	20	41	165	482
GN 709.1-50-M24-RR	50	M 24	34.5	40	35	24	41	165	511

GN 709.1-RH

Description	d1	d2	d3	d4	l2 ±0.1	l3	A/F	Static load max. in kN	⚖
GN 709.1-13-M8-RH	13	M 8	8.3	10	13	8	11	10	16
GN 709.1-20-M8-RH	20	M 8	12.8	16	18	10	17	25	49
GN 709.1-20-M10-RH	20	M 10	12.8	16	18	10	17	25	51
GN 709.1-20-M12-RH	20	M 12	12.8	16	18	12	17	25	54
GN 709.1-30-M16-RH	30	M 16	20	25	27	16	27	90	188
GN 709.1-50-M20-RH	50	M 20	34.5	40	35	20	41	165	633
GN 709.1-50-M24-RH	50	M 24	34.5	40	35	24	41	165	662

GN 709.1-RRH

Description	d1	d2	d3	d4	l2 ±0.1	l3	A/F	Static load max. in kN	⚖
GN 709.1-13-M6-RRH	13	M 6	8.3	10	13	8	11	10	14
GN 709.1-13-M8-RRH	13	M 8	8.3	10	13	8	11	10	16
GN 709.1-20-M8-RRH	20	M 8	10.5	16	18	10	17	25	48
GN 709.1-20-M10-RRH	20	M 10	10.5	16	18	10	17	25	50
GN 709.1-20-M12-RRH	20	M 12	10.5	16	18	12	17	25	53
GN 709.1-30-M16-RRH	30	M 16	20	25	27	16	27	90	190
GN 709.1-50-M20-RRH	50	M 20	34.5	40	35	20	41	165	639
GN 709.1-50-M24-RRH	50	M 24	34.5	40	35	24	41	165	637

